

CERTIFICATE OF LOCATION OF GOVERNMENT CORNER

NORTH QUARTER Corner of Section 10, Township 106, Range 41, 5TH P.M.

STATE OF MINNESOTA, County of MURRAY

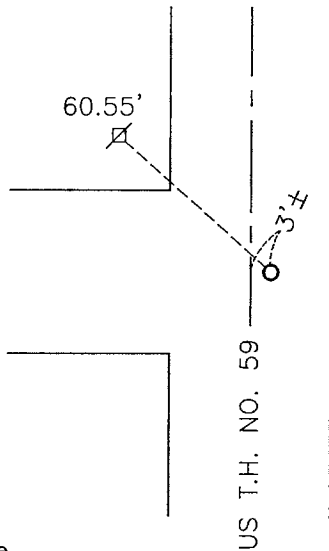
At the corner location shown on the sketch:

On _____ found a _____
DATE

left monument as found, lowered monument, removed monument (explain)

On 12-08-2011 placed a survey spike with seal #43844.
DATE

SKETCH OF REFERENCE TIES



Minnesota State Plane Coordinate System Murray County Datum NAD83 (1996)

N: 158165.912
E: 503484.767

Nail and survey marker in utility pole NW 60.55'
Corner is 3'± east of the center line of US T.H. No. 59

Statement of evidence relative to this corner location is on back of page.

I hereby certify that this document and the data contained herein was prepared by me or under my direct supervision.

[Signature] 1/23/12
SIGNATURE DATE

Registration No. 43844

Land Surveyor, Professional Engineer
 County Surveyor, County Engineer

OFFICE OF THE COUNTY RECORDER
County of _____

I hereby certify that this document was filed in the Co. Recorders office at _____ .M on the _____ day of JAN 25 2012 A.D. 20____

County Recorder James V. Johnson
By _____, Deputy

DOCUMENT NO. _____

Statement of Evidence

In 1861, L. G. M. Fletcher did the original subdivision of the township.

In 1977, Delbert Rieke set a PK nail at the corner while surveying Suedbeck First Addition.

On December 8, 2011, Bueltel-Moseng Land Surveying set a survey spike with seal #43844 using found pins in Suedbeck First Addition.